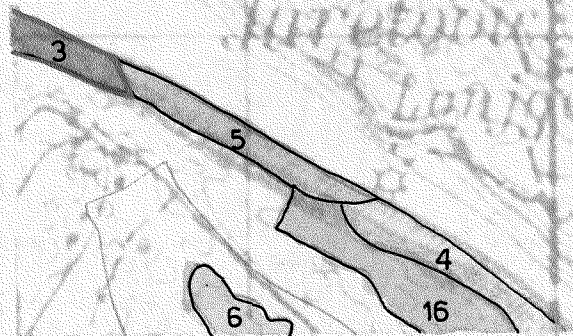
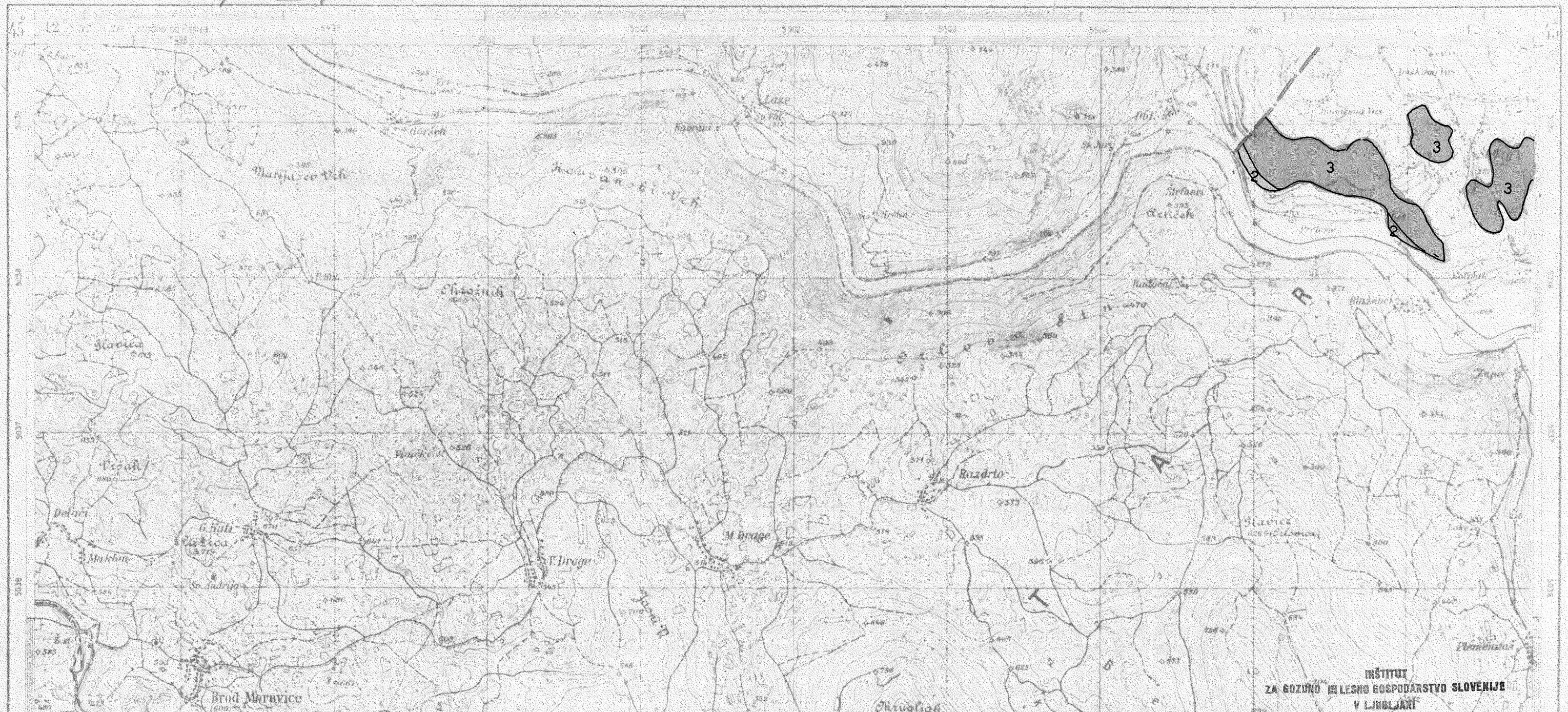


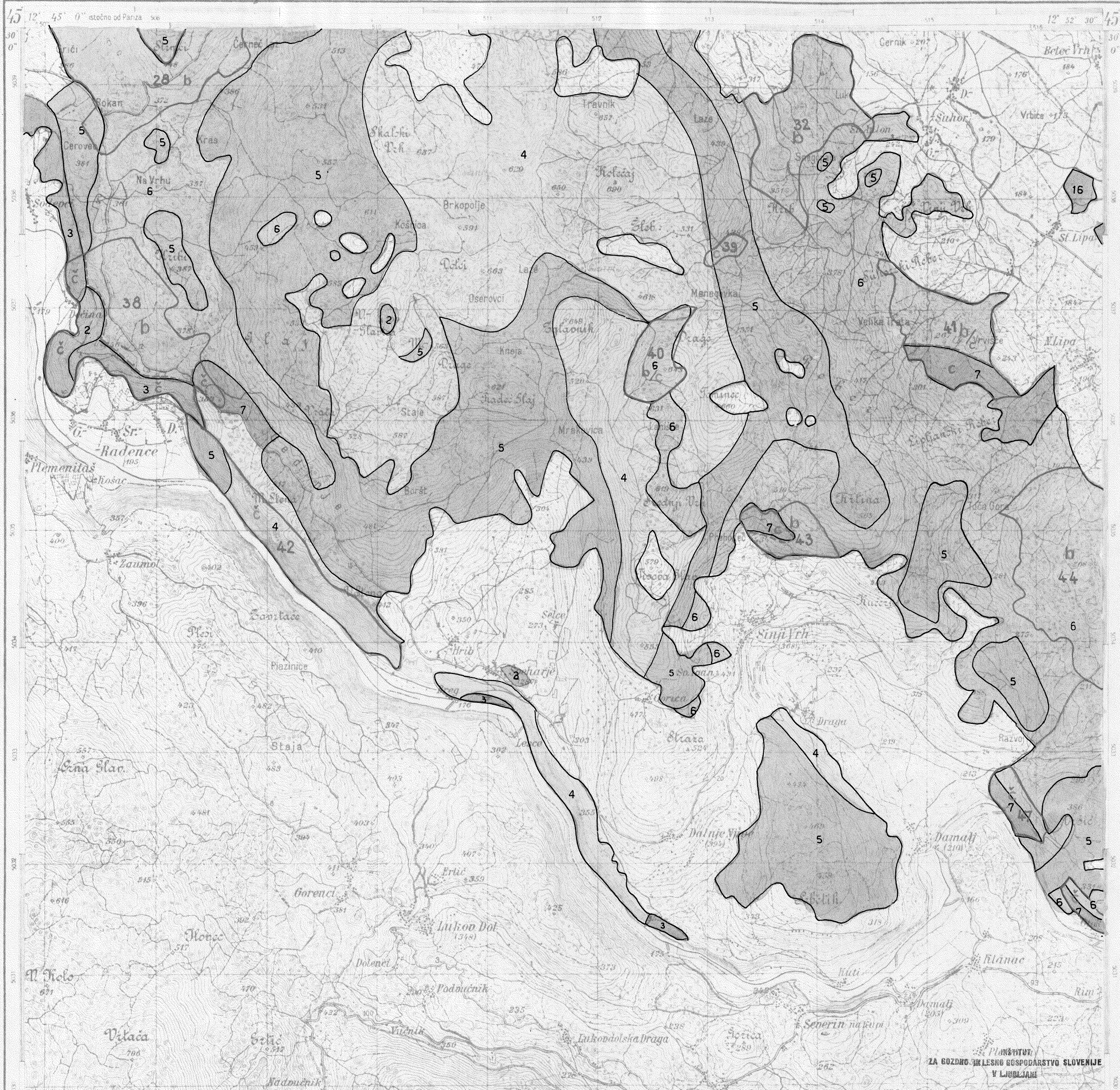


8



INŠTITUT
ZA GOZDNO IN LESNO GOSPODARSTVO SLOVENIJE
V LJUBLJANI





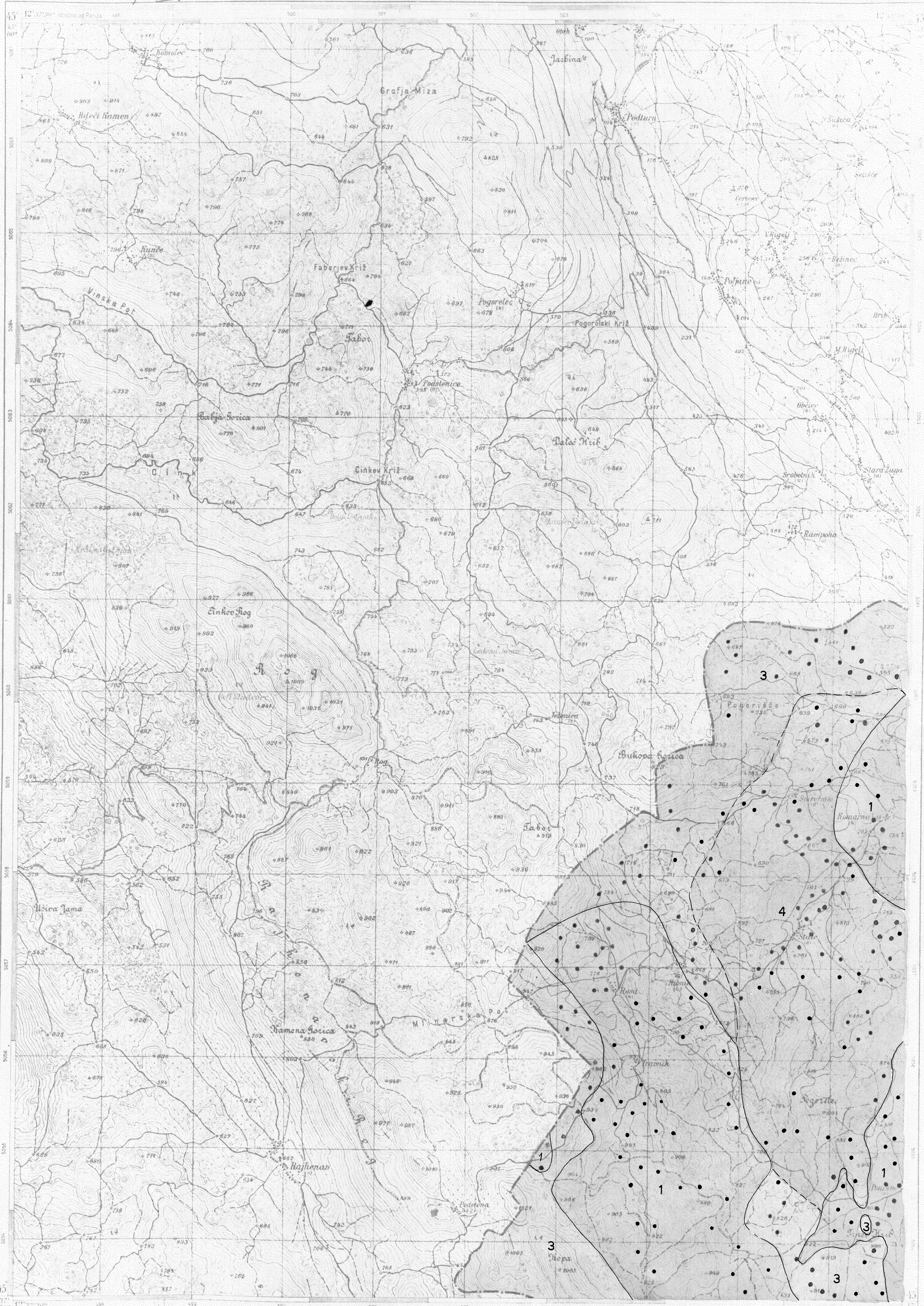




E1.56/КПМ

NOVO MESTO

1





INSTITUT ZA GOZDNO IN LESNO GOSPODARSTVO LRS
V LJUBLJANI

PETROGRAFSKA KARTA

- | | | | | | |
|---|--------------------------------|----|---|---------------|----------------------|
| 1 | dolomit | 6 | kredni fliš
(lapor, apnenec, peščenjak) | 11 | holocenske naplavine |
| 2 | jurski apnenec | 7 | apneni razvoj
krednega fliša | 12 | boksit |
| 3 | kredni apnenec | 8 | rdeča ilovica
(naplavina) | 13 | kremenovi prodniki |
| 4 | menjava apnenca
in dolomita | 9 | rdeča ilovica
(preperina) | 14 | roženci |
| 5 | dolomitizirani apnenec | 10 | zgorjneterciarni semeniti
(peščeni lapor, rumena
sljudnata ilovica) | zakrasedlost: | |
| | | | | ● 00 - 30 % | |
| | | | | ● 30 - 50 % | |
| | | | | ● 50 - 70 % | |
| | | | | ● NAD 70 % | |

Skartiral: geolog Lojze Strmole in sodelavci

54

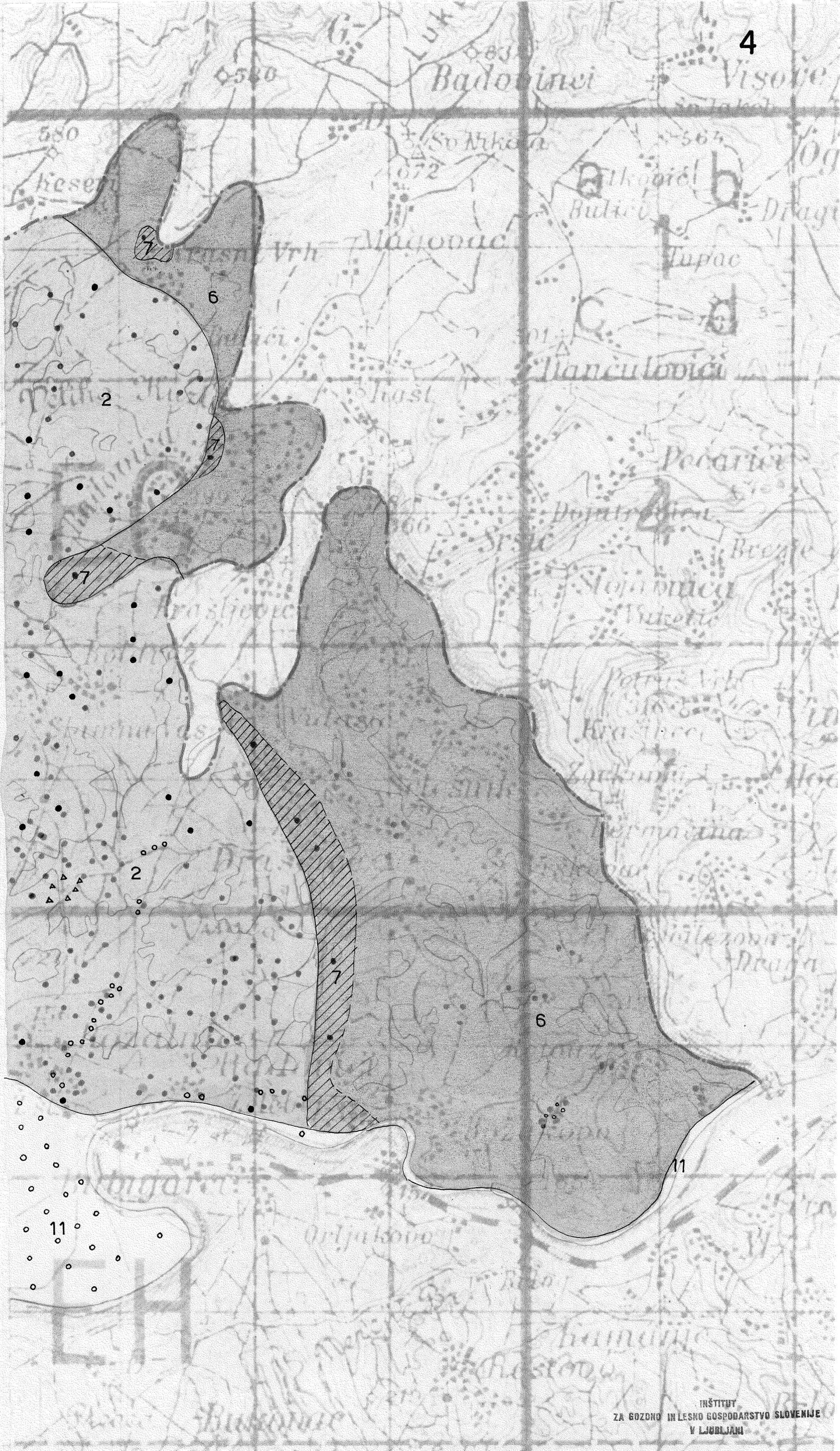
52

50

58

56

54



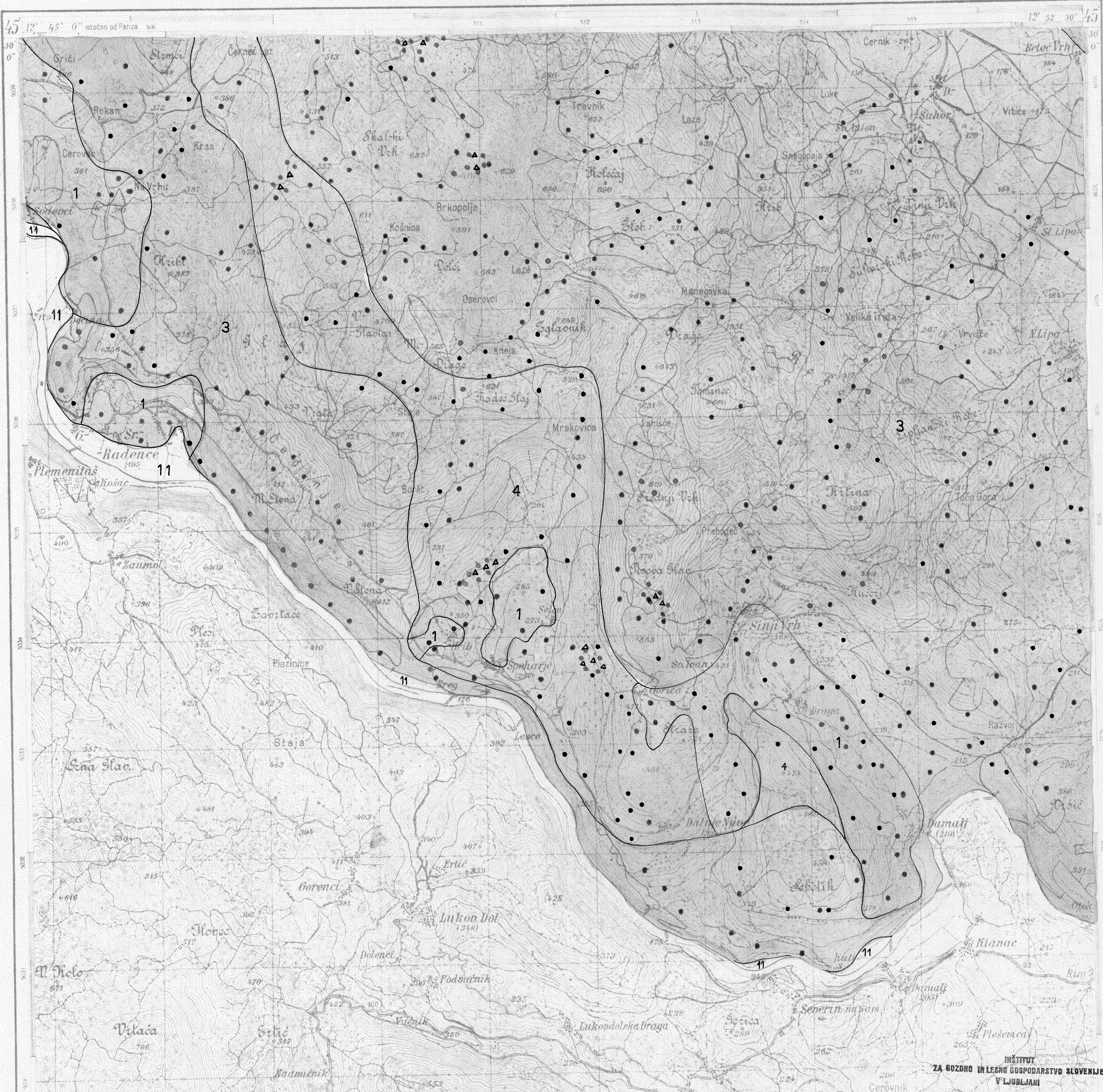
1	2	3	4
3	4		

EI. 56/K II. / 10

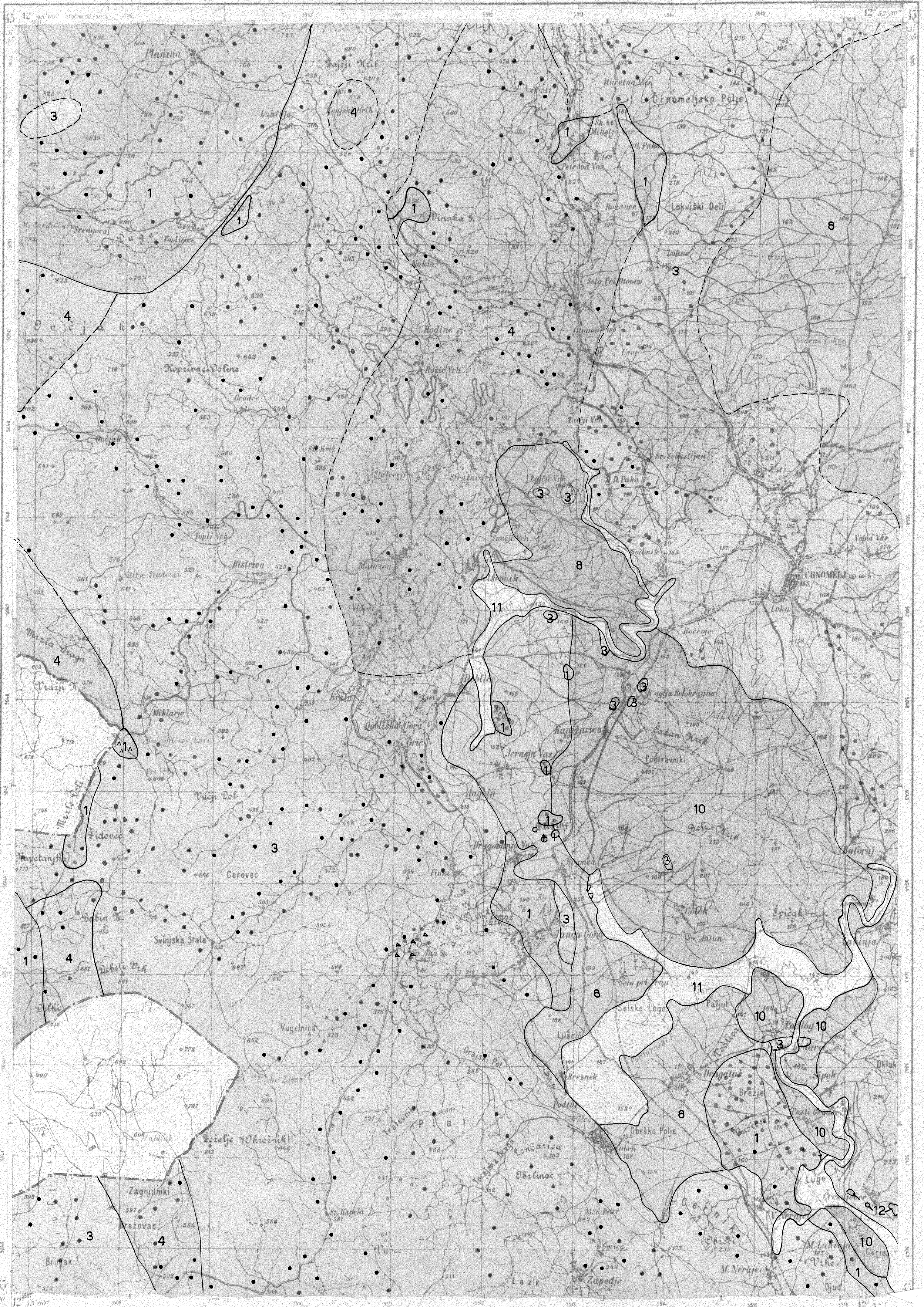
OGULIN

10

2-a

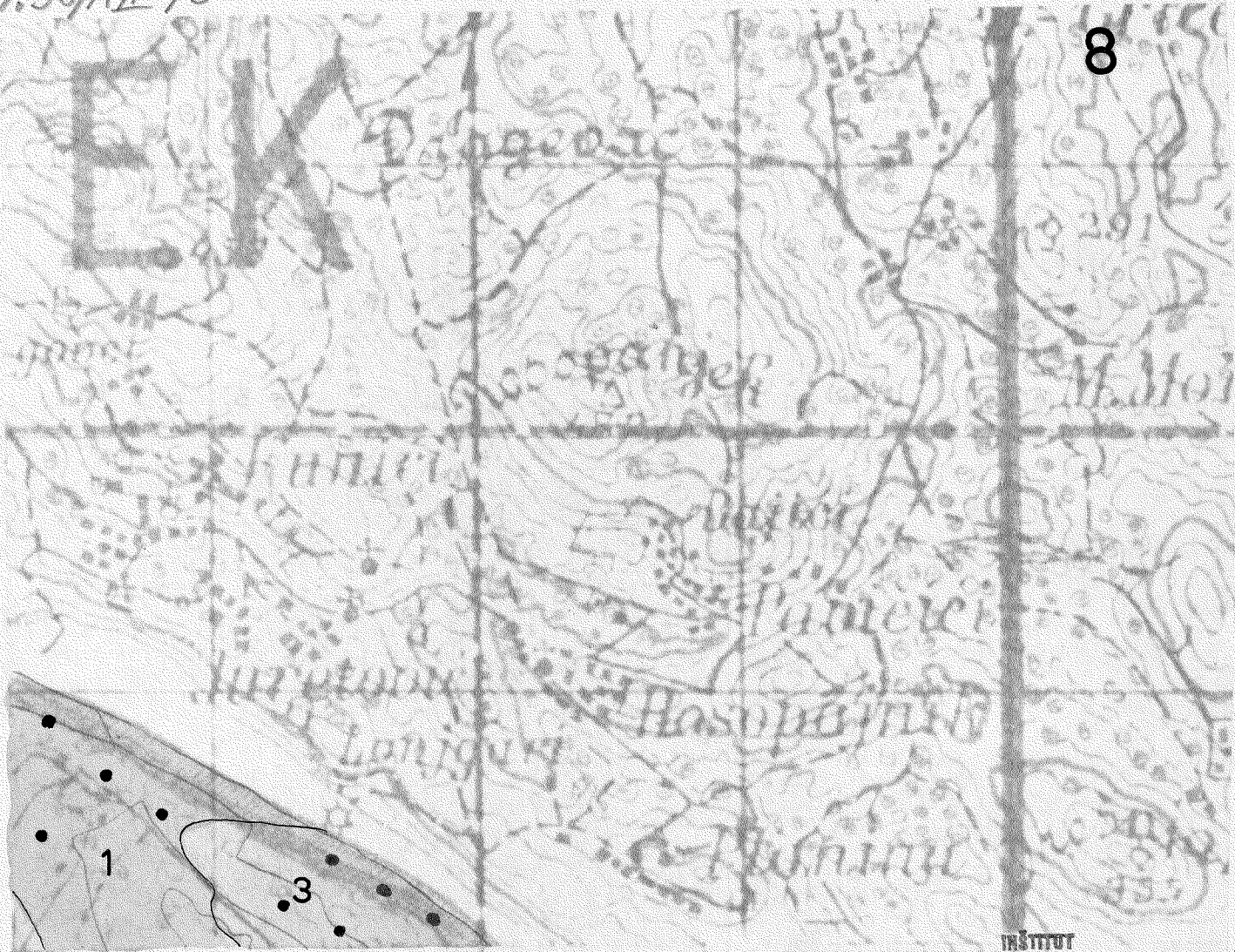


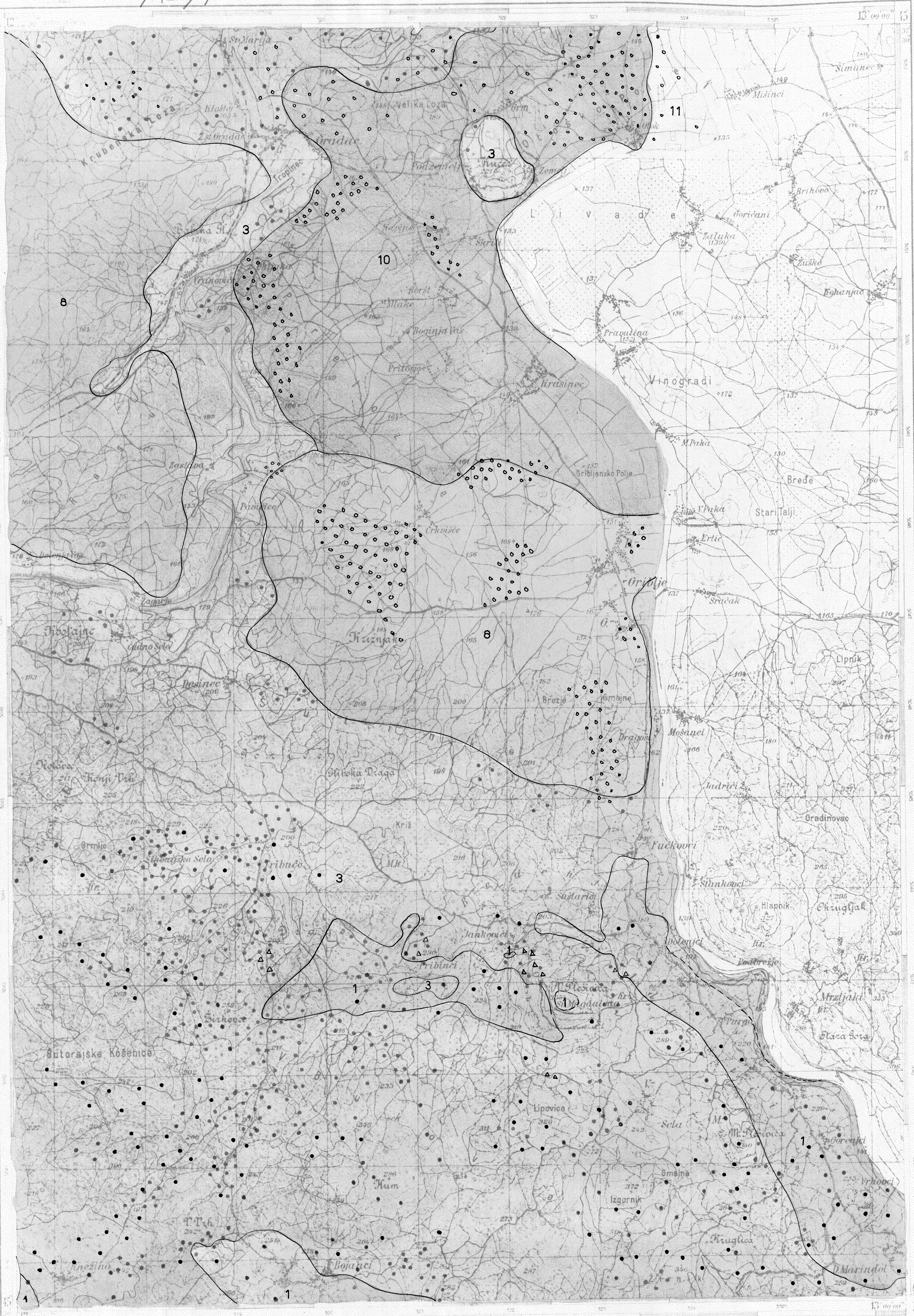
EI. 56/KII./16

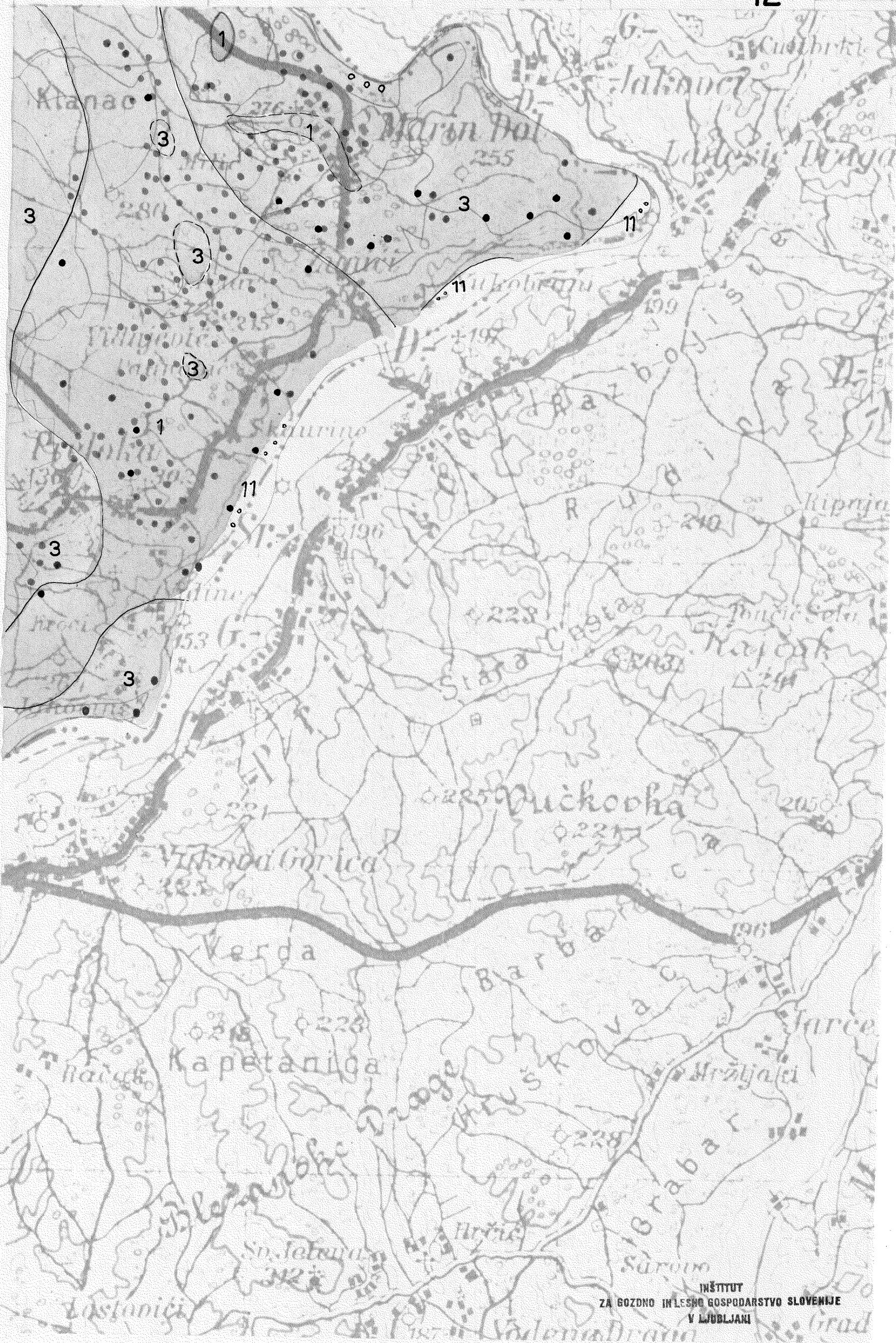


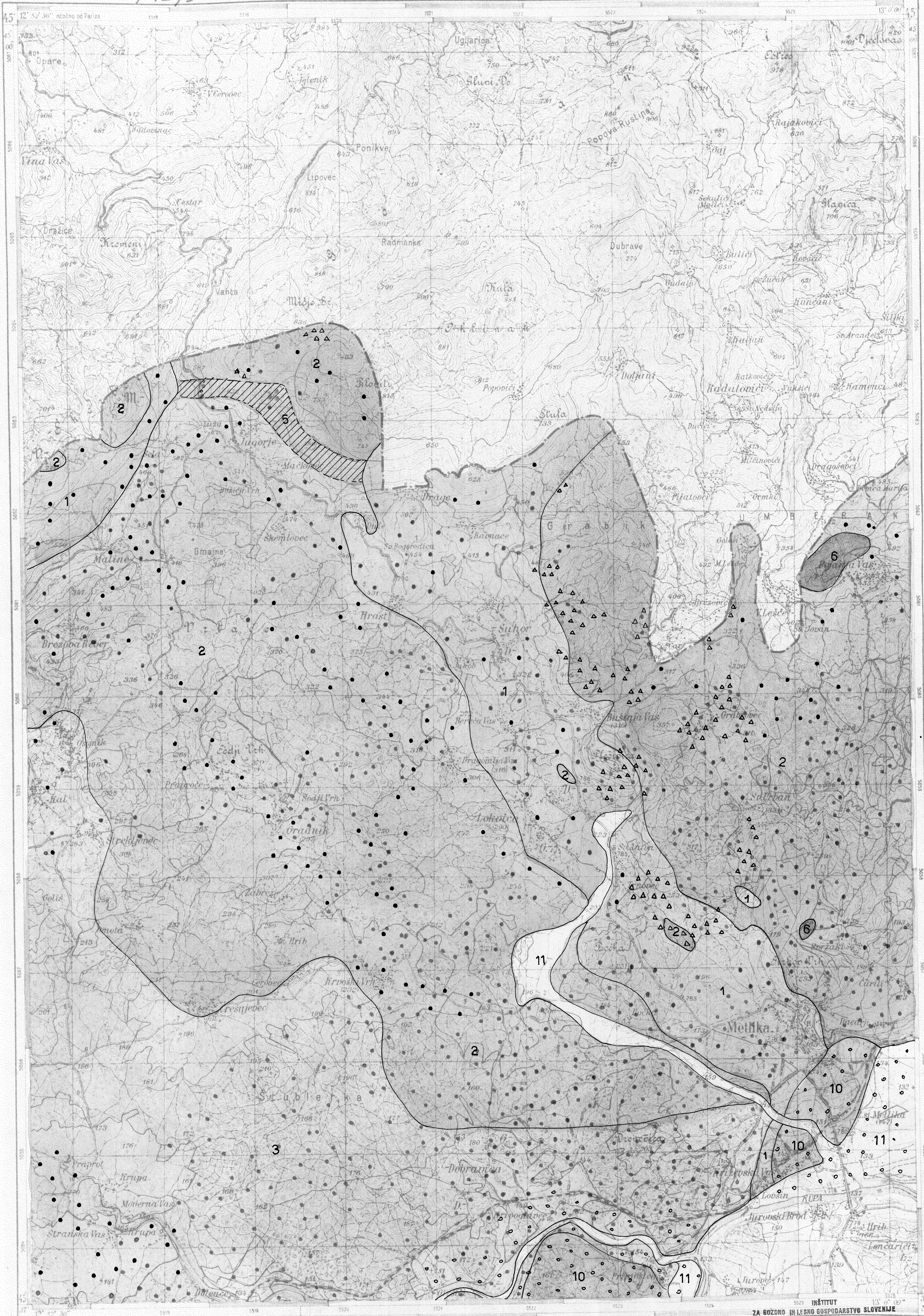
EI.56/KII.18

8









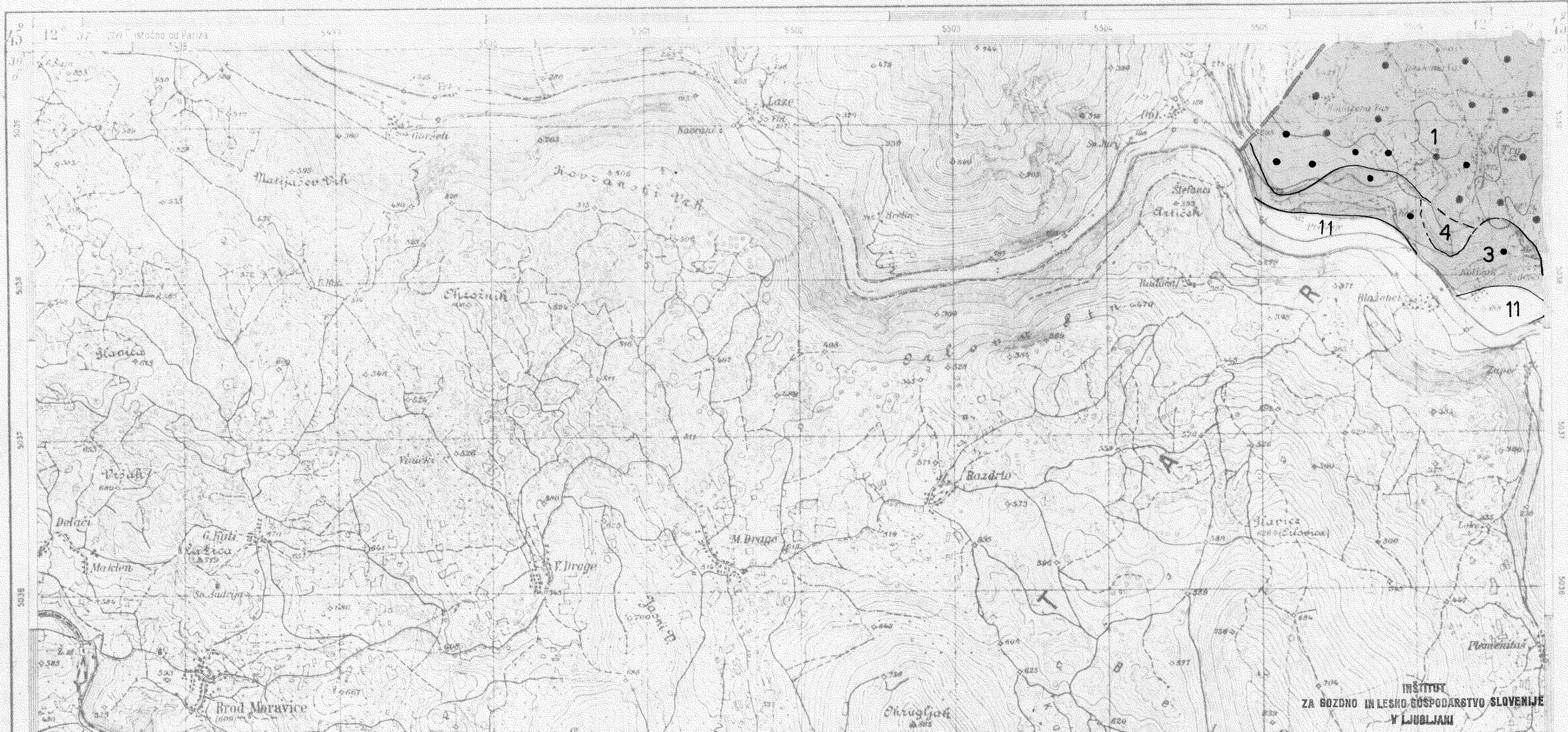
1	2
3	4

El. 56/K II. 19

OGULIN

9

1-b





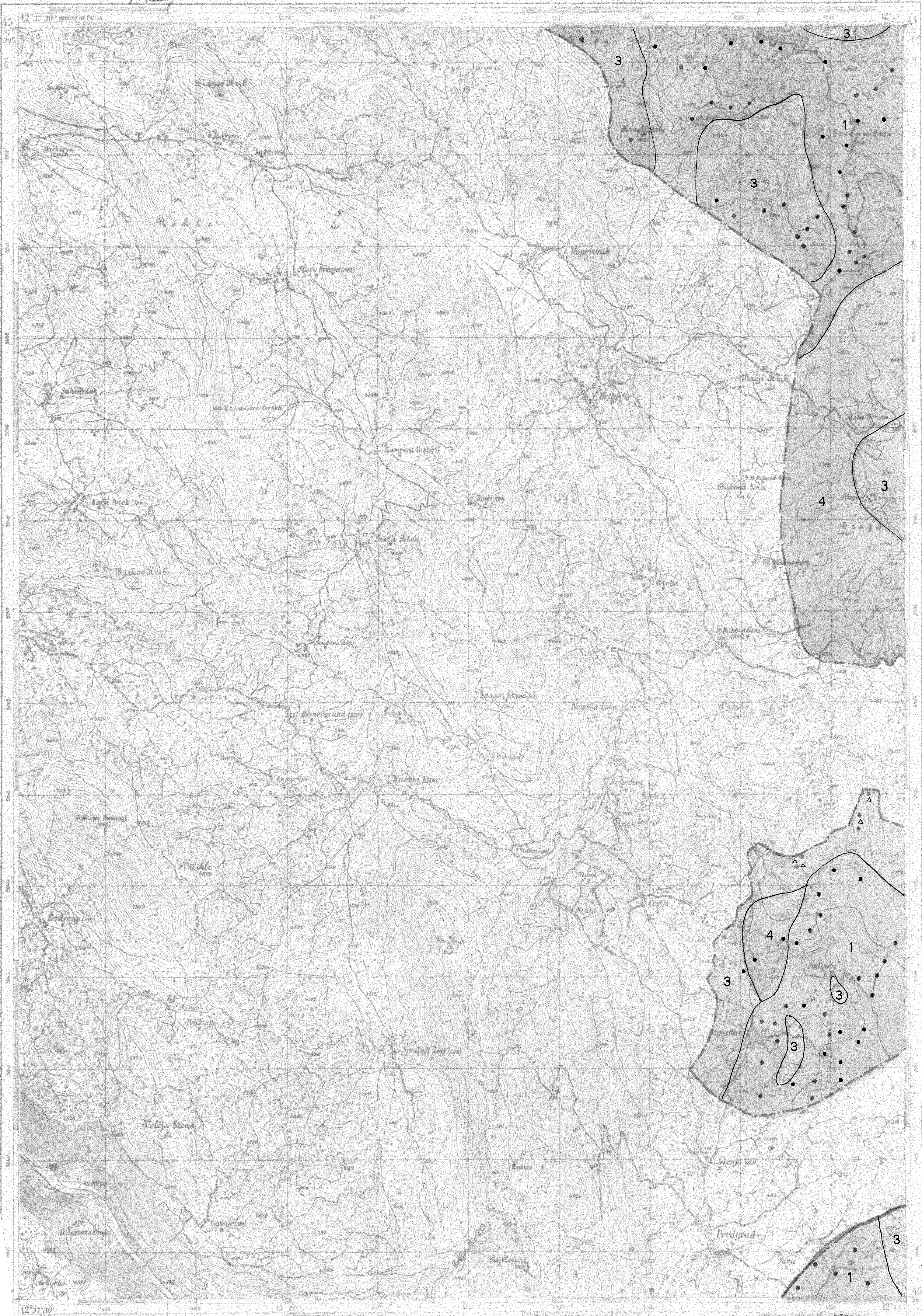
a
3
b
c
d
4

E1.56/KII/15

NOVO MSTO

5

3-d



12° 37' 30" 5498 5499 5500 5501 5502 5503 5504 5505 5506 12° 37' 30"